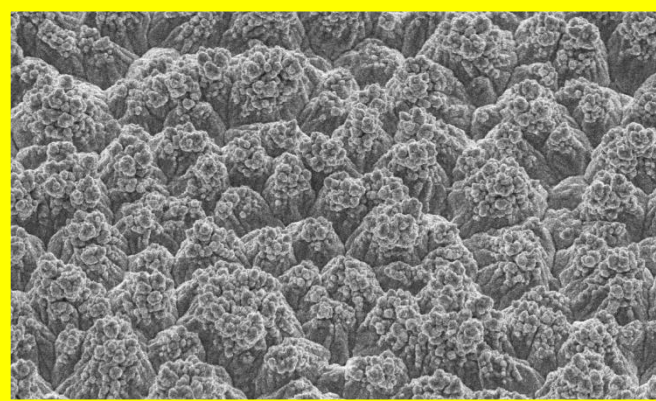
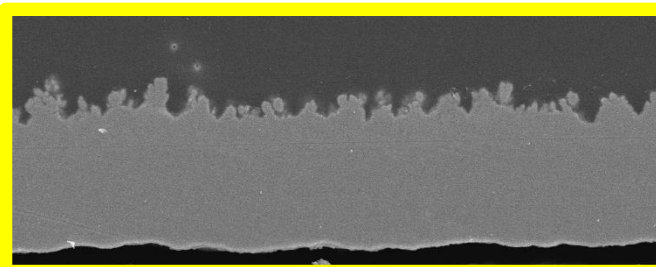


35μm Untreated-side Foil SEM × 1,500



35μm Treated-side Foil SEM × 1,500



35μm Foil Cross Section SEM × 1,000

Composition : Laminate side (Bonding side)

– Cross Section :



Resist side

– Resist/ Bonding side Color : Pink/ Pink

– IPC-Grade 3

Application:

Automotive , power supplies, solar panels and High Tg/Mid. Loss PP substrate.

Feature:

1. Suitable for lower roughness and high power material.
2. Arsenic free foil which suitable for halogen free material.
3. With excellent peel and etching ability & anti-undercut ability at high Tg/Mid. Loss PP material.
4. With excellent anti-oxidation & shelf life.
5. With excellent etching factor at HDI substrate.
6. Thin copper foil stable production capacity, can fully supply customer needs.

Type	LP310		Thickness (μm)	Physical Properties						Roughness JIS B 601 (μm)		
	(oz)	(μm)		Area Wt. (g/m ²)	Tensile(kg/mm ²)		Elongation(%)		Peel Strength FR4*1		Ra(s/s)	Rz(m/s)
LP310 (Pink Color)	Toz	12μ	12±1.5	107±3	≥33	≥17	≥3	≥3	≥5.5	≥0.98	≤0.43	≤5.5
	Joz	15μ	15±2.0	125±3	≥33	≥17	≥5	≥3	≥6.5	≥1.16	≤0.43	≤6.5
	Hoz	18μ	18±2.0	153±5	≥33	≥17	≥5	≥3	≥7.0	≥1.25	≤0.43	≤7.0
	0.7oz	25μ	25±3.0	220±6	≥30	≥17	≥6	≥4	≥8.0	≥1.43	≤0.43	≤9.0
	1oz	35μ	35±3.5	285±6	≥30	≥17	≥10	≥5	≥9.0	≥1.61	≤0.43	≤10.0
	Voz	36μ	36±3.6	325±8	≥30	≥17	≥10	≥5	≥9.0	≥1.61	≤0.43	≤11.0
	1.2oz	40μ	40±4.0	355±8	≥30	≥17	≥10	≥5	≥9.0	≥1.61	≤0.43	≤11.0
	1.5oz	53μ	53±5.3	435±8	≥28	≥15	≥10	≥6	≥10.0	≥1.79	≤0.43	≤12.0
	特殊	54μ	54±5.4	472±10	≥28	≥15	≥10	≥6	≥10.0	≥1.79	≤0.43	≤13.0
	2oz	70μ	70±7.0	580±15	≥26	≥15	≥10	≥6	≥12.0	≥2.14	≤0.43	≤14.0

※ FR4*1 : Tg ≒ 140°C ※ This is representative data, not guarantee.

The best application of the copper foil manufacturer & service provider