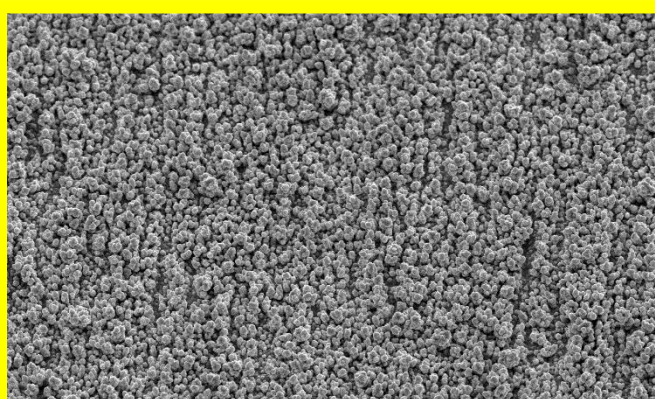
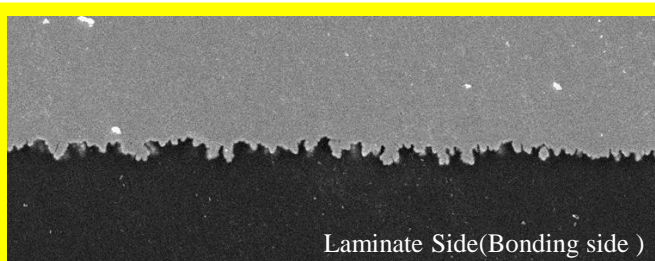


12μm untreated-side Foil SEM × 1500



12μm treated-side Foil SEM × 1500

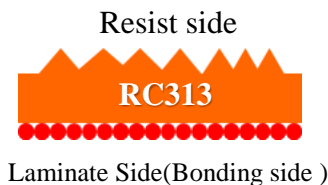


Laminate Side(Bonding side)

12μm Foil Cross Section SEM × 1500

Composition :

– Cross Section :



– Resist/ Bonding side Color : Pink/ Pink

Application:

- Sigle/Double side(2L-FCCL) for Casting process.
- Sigle/Double side 3L-FCCL
- Material: PI varnish / Epoxy varnish

Feature:

- Special treatment with excellent glue overflow control ability. With high peel especially for PI varnish / Epoxy varnish material.
- Micro dendrite treated, enhance etching ability and anti- undercut ability for fine line process, suitable for HDI, FCCL .
- Excellent anti-oxidation and shelf life.

Type	RC313		Thickness	Physical Properties							Roughness(μm)	
				Area Wt.	Tensile(kg/mm ²)		Elongation(%)		Peel Strength		Rz (Treated side)	Rz (Untreated side)
	(oz)	(μm)	(μm)	(g/m ²)	RT	180°C	RT	180°C	(lb/inch)	kg/cm		
RC313 (Pink Color)	Qoz	9μ	9±1.0	85±3	≥29	≥17	≥2	≥3	≥4.0	≥0.71	≤3.0	≤4.5
	Toz	12μ	12±1.5	107±3	≥29	≥17	≥3	≥4	≥4.5	≥0.80	≤3.0	≤5.0
	Joz	15μ	15±2.0	125±3	≥29	≥17	≥4	≥4	≥5.0	≥0.89	≤3.0	≤5.5
	Hoz	18μ	18±2.0	153±3	≥29	≥17	≥4	≥4	≥5.0	≥0.89	≤3.0	≤6.0
	1oz	35μ	35±3.5	285±5	≥29	≥17	≥10	≥5	≥7.0	≥1.25	≤3.0	≤8.0
	2oz	70μ	70±7.0	580±15	≥26	≥15	≥10	≥6	≥8.0	≥1.43	≤3.0	≤11.0

※上述表列為代表性數據非保證值 (This is representative data, not guarantee.)