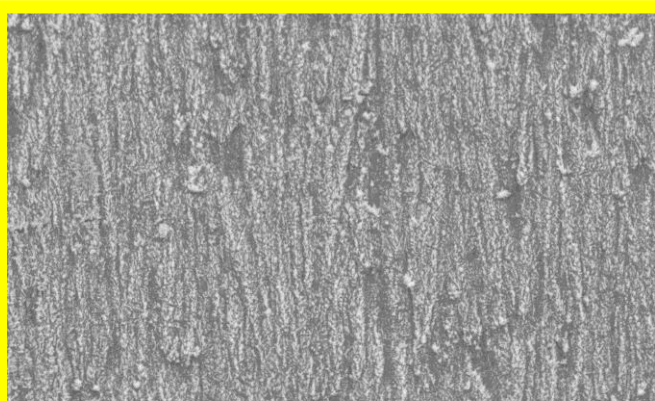
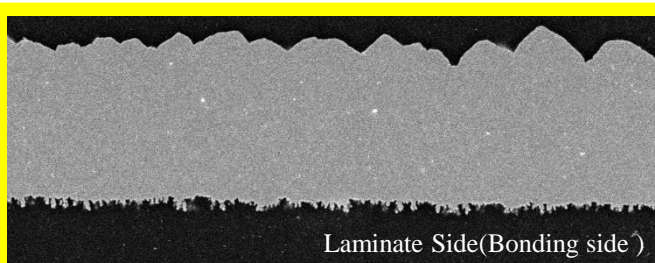


35μm untreated-side Foil SEM × 1,500



35μm treated-side Foil SEM × 1,500



Laminate Side(Bonding side)

35μm Foil Cross Section SEM × 1,000

## Composition :

– Cross Section :



– Resist/ Bonding side Color : Pink/ Pink

## Application:

- Inner layer of Server/Switch/Storage
- Material:  
PPO/PPE prepreg/High Tg prepreg  
Low-loss/Ultra loss prepreg

## Feature:

- RG312 foil with very low profile to have excellent signal integrity(SI) performance compared to regular Reverse Treated copper Foil (RTF).
- Special treatment with high peel strength
- low profile of RG312 makes it an excellent material to apply to high speed transmission board.
- Micro copper-crystal treated, enhance etching ability and anti- undercut ability for fine line process, suitable for HDI board.
- Excellent anti-oxidation and shelf life.

Type	RG312		Thickness (μm)	Physical Properties						Roughness JIS94 (μm)		
				Area Wt. (g/m <sup>2</sup> )	Tensile(kg/mm <sup>2</sup> )		Elongation(%)		Peel Strength ML *1		Rz (Treated side)	Rz (Untreated side)
	(oz)	(μm)			RT	180°C	RT	180°C	(lb/inch)	kg/cm		
RG312 (Pink Color)	Hoz	18μ	18±2.0	153±5	≥29	≥17	≥8	≥6	≥3.5	≥0.63	≤2.1	≤4.5
	1oz	35μ	35±3.5	285±5	≥29	≥17	≥15	≥8	≥4.0	≥0.71	≤2.1	≤6.5

※ ML \*1 :Mid-loss Resin

※This is representative data, not guarantee.