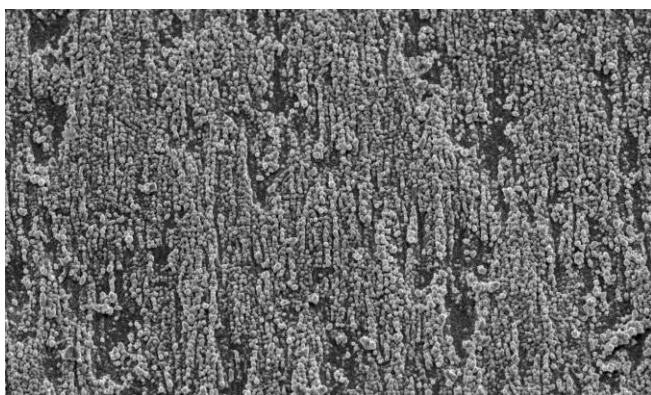
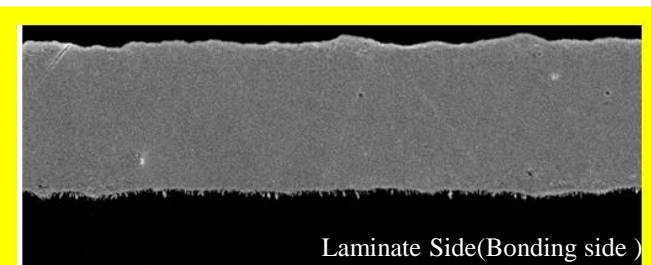


12μm untreated-side Foil SEM × 1500



12μm treated-side Foil SEM × 1,500



Laminate Side(Bonding side)

12μm Foil Cross Section SEM × 1,500

Composition :

Resist side

– Cross Section :



Laminate Side(Bonding side)

– Resist/ Bonding side Color : Pink/ Pink

Application:

- Handheld products such as smartphones are expanding into automobiles, the Internet of Things,(IoT) and artificial intelligence.
- Material: TPI / MPI film

Feature:

- High Elongation and flexibility after annealing.
- Fine copper nodules and low roughness characteristics.
- Provide good fine line etch capability.
- Good peel strength and dimensional stability.
- Excellent flexibility.
- This product has excellent heat resistance and weather resistance.

Type	RP410		Thickness	physical Properties							Roughness JIS94 (μm)	
				Area Wt.	Tensile(kg/mm ²)		Elongation(%)		Peel Strength PP(Tg:140°C)		Rz (Treated side)	Ra (Untreated side)
	(oz)	(μm)	(μm)	(g/m ²)	RT	180°C	RT	180°C	(lb/inch)	kg/cm		
RL450 (Pink Color)	Toz	12μ	12±1.5	105±5	≥30	≥17	≥5	≥4	≥4.0	≥0.72	≤2.5	≤0.35
	Hoz	18μ	18±2.0	153±5	≥30	≥17	≥8	≥5	≥4.5	≥0.80	≤2.5	≤0.35

※This is representative data, not guarantee.