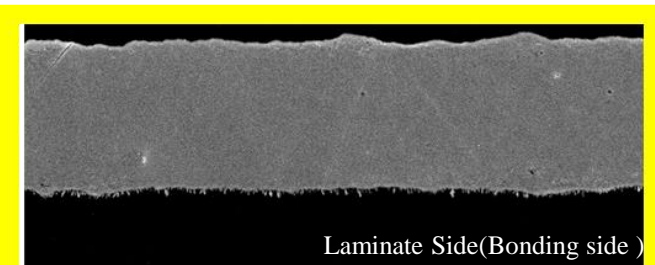
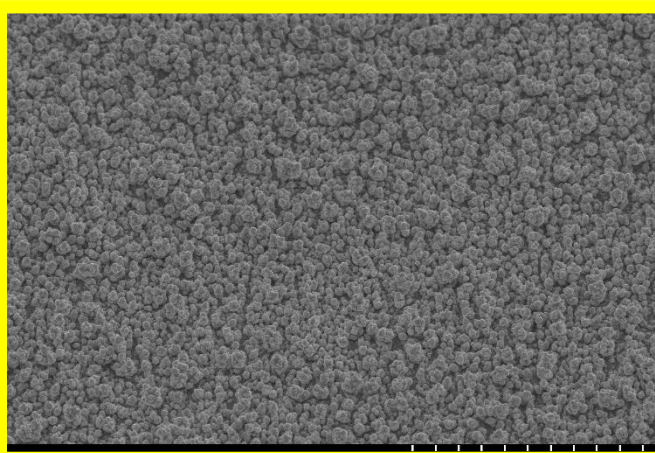


35μm untreated-side Foil SEM × 1500



Laminate Side(Bonding side)

35μm Foil Cross Section SEM × 1,500

Composition :

Resist side

– Cross Section :



Laminate Side(Bonding side)

– Resist/ Bonding side Color : Pink/ Pink

Application:

- HSD (High speed digital)
- Base station / Server
- Material: BT/PPO/PPE

Feature:

- RP410 foil with hyper very low profile to have excellent insulation result and good etch ability, and lower electrical resistivity compared to regular ED foils.
- Very low profile of RP410 makes it an excellent material to apply to high speed transmission board.
- Comply with environment regulation.
- Excellent SI performance and anti-oxidation and shelf life.

種類 Type	代號		厚度 Thickness	機械特性/Mechanical Properties							表面粗糙度 Roughness(μm)	
				基重 Area Wt.	抗張力 Tensile(kg/mm ²)		延伸率 Elongation(%)		抗撕強度 Peel Strength		Rz (Treated side)	Ra (Untreated side)
	(oz)	(μm)	(μm)		(g/m ²)	RT	180℃	RT	180℃	(lb/inch)		
RP410 (Pink Color)	Toz	12μ	12±1.5	107±3	≥27	≥15	≥3	≥2.5	≥4.0	≥0.72	≤3.0	≤0.3
	Hoz	18μ	18±2.0	153±3	≥27	≥15	≥6	≥4	≥5.0	≥0.90	≤3.0	≤0.3
	1oz	35μ	35±3.5	285±5	≥27	≥15	≥11	≥5	≥6.5	≥1.07	≤3.0	≤0.3

※上述表列為代表性數據非保證值 (This is representative date, not guarantee.)