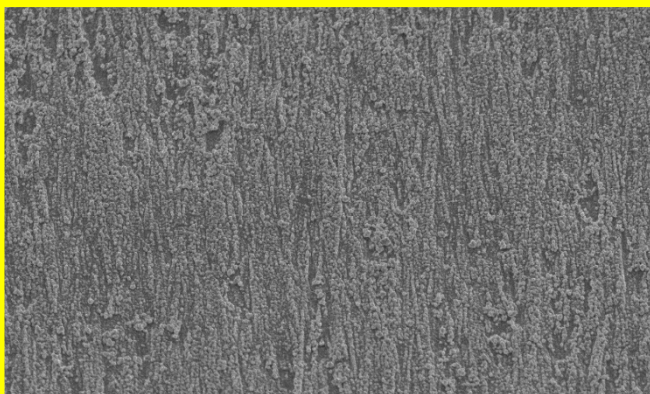
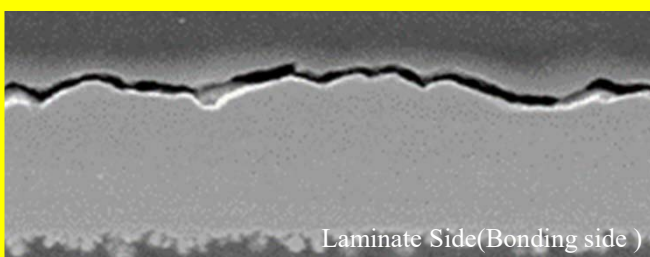


12µm untreated-side Foil SEM × 1500



12µm treated-side Foil SEM × 1500



Laminate Side(Bonding side)

12µm Foil Cross Section SEM × 1000

Composition :

– Cross Section :



– Resist/ Bonding Side Color : Pink/ Pink

Application:

- Double side(2L-FCCL) for laminate process.
- Material: TPI film and MPI film

Feature:

- RV312 style of foil is a so-called “Reverse Treated Foil”
- Special treatment with excellent glue overflow control ability. With high peel especially for TPI film and MPI film material.
- Micro dendrite treated, enhance etching ability and anti- undercut ability for fine line process, suitable for HDI, FCCL .
- Excellent anti-oxidation and shelf life.

Type	RV312		Thickness (µm)	Physical Properties							Roughness(µm)	
				Area Wt.		Tensile(kg/mm ²)		Elongation(%)		Peel Strength		Rz (Treated side)
	(oz)	(µm)		(g/m ²)	RT	180°C	RT	180°C	(lb/inch)	kg/cm		
RV312 (Pink Color)	Qoz	9µ	9±1.0	80±3	≥29	≥17	≥2	≥3	≥3.5	≥0.63	≤2.5	≤4.5
	Toz	12µ	12±1.5	107±3	≥29	≥17	≥3	≥4	≥4.0	≥0.71	≤2.5	≤5.0
	Joz	15µ	15±2.0	125±3	≥29	≥17	≥4	≥4	≥4.5	≥0.8	≤2.5	≤5.5
	Hoz	18µ	18±2.0	153±3	≥29	≥17	≥5	≥4	≥4.5	≥0.8	≤2.5	≤7.0
	1oz	35µ	35±3.5	285±5	≥29	≥17	≥10	≥5	≥6.0	≥1.07	≤2.5	≤8.0
	2oz	70µ	70±7.0	580±10	≥26	≥15	≥10	≥6	≥8.0	≥1.43	≤2.5	≤11.0

※上述表列為代表性數據非保證值 (This is representative data, not guarantee.)