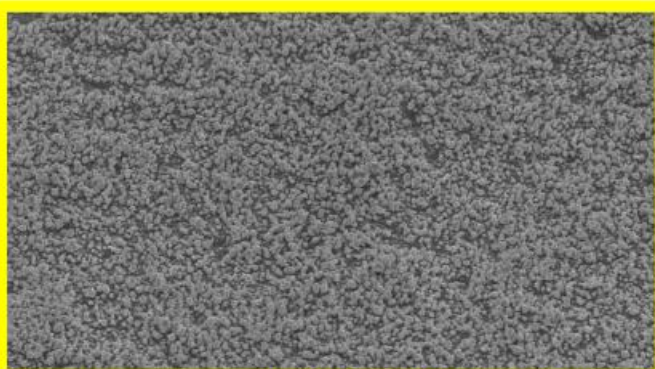
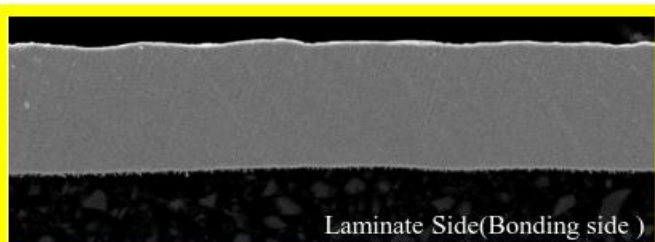


18μm untreated-side Foil SEM × 1500



18μm treated-side Foil SEM × 1,500



Laminate Side(Bonding side)

18μm Foil Cross Section SEM × 1,500

Composition :

Resist side

– Cross Section :



Laminate Side(Bonding side)

– Resist/ Bonding side Color : Pink/ Pink

Application:

- Handheld products such as smartphones are expanding into automobiles, the Internet of Things,(IoT) and artificial intelligence.
- Material: Casting 2L-FCCL

Feature:

- High Elongation and flexibility after annealing
- Fine copper nodules and low roughness characteristics
- Provide good fine line etch capability
- Good peel strength and dimensional stability.
- Excellent flexibility
- This product has excellent heat resistance and weather resistance.

Type	FC450		Thickness	Physical Properties							Roughness(μm)	
				Area Wt.	Tensile(kg/mm ²)		Elongation(%)		Peel Strength FR4 ^{*1}			
					(oz)	(μm)	(μm)	(g/m ²)	RT	180°C	RT	180°C
FCL450 (Pink Color)	Toz	12μ	12±1.5	107±3	≥ 30	≥ 17	≥ 4	≥ 3	≥ 4.0	≥ 0.716	≤ 0.3	≤ 2.5
	Hoz	18μ	18±2.0	153±3	≥ 30	≥ 17	≥ 7	≥ 5	≥ 5.0	≥ 0.890	≤ 0.3	≤ 2.5
	1oz	35μ	35±3.5	285±5	≥ 30	≥ 17	≥ 12	≥ 6	≥ 6.0	≥ 1.075	≤ 0.3	≤ 2.5

※ FR4^{*1} : Tg≒ 140°C ※This is representative data, not guarantee.