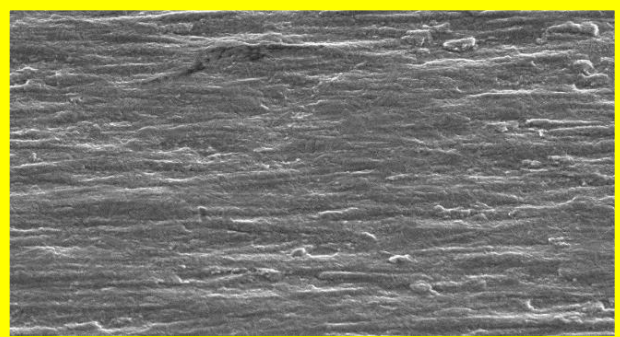
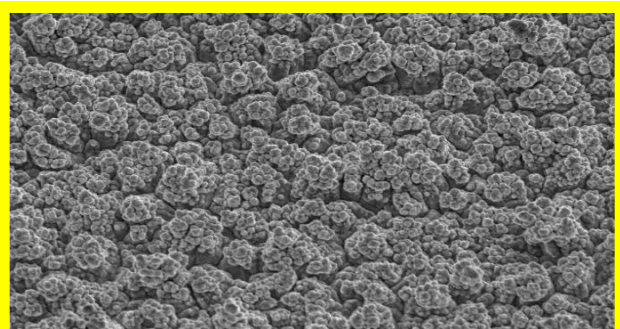




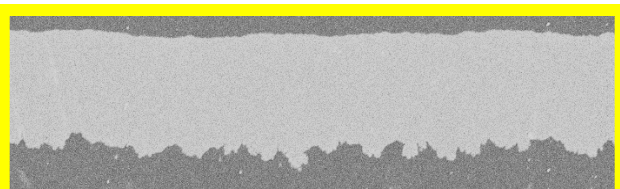
The First Choice Of Copper Foil Provider



18µm untreated-side Foil SEM × 1500



18µm treated-side Foil SEM × 1500



18µm Foil Cross Section × 1000

Application:

Automotive 、 power suppliers 、
FR2,FR4,CEM-1,CEM-3 and other CCL
lamination.

Feature:

1. Suitable for higher roughness and high power material.
2. With special coating on treated side which have excellent peel for CEM-1 , CEM-3 and FR4.
3. With excellent anti-oxidation and shelf life.
4. With excellent etching factor at HDI substrate.
5. Stable mass production capacity, can fully supply customer needs.

Type	Copper		Thickness	Physical Properties							Roughness(µm)	
				Area Wt.	Tensile(kg/mm ²)		Elongation(%)		Peel Strength (T _g :140°C)			
	(oz)	(µm)			(µm)	(g/m ²)	RT	180°C	RT	180°C	(lb/inch)	kg/cm
LP410 (Pink Color)	Toz	12µ	12±1.2	107±3	≥28	≥17	≥3	≥2	≥5.6	≥1.0	≤0.4	≤6.0
	Joz	15µ	15±1.5	125±3	≥28	≥17	≥5	≥2	≥6.5	≥1.164	≤0.4	≤7.0
	HoZ	18µ	18±1.8	153±5	≥28	≥17	≥5	≥3	≥7.5	≥1.34	≤0.4	≤8.0
	1oz	35µ	35±3.5	285±6	≥28	≥17	≥6	≥5	≥10.0	≥1.79	≤0.4	≤12.0
	1.5oz	53µ	53±5.3	435±8	≥26	≥15	≥6	≥5	≥11.0	≥1.97	≤0.4	≤13.0
	2oz	70µ	70±7.0	580±15	≥26	≥15	≥10	≥5	≥12.0	≥2.14	≤0.4	≤15.0