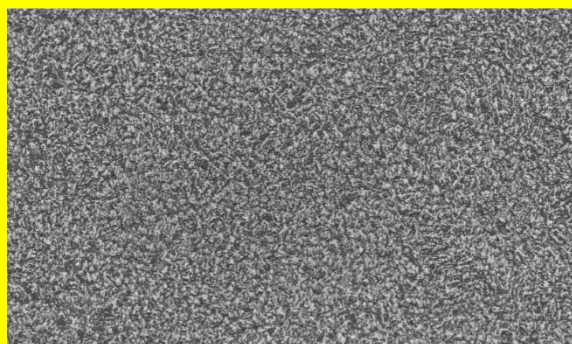
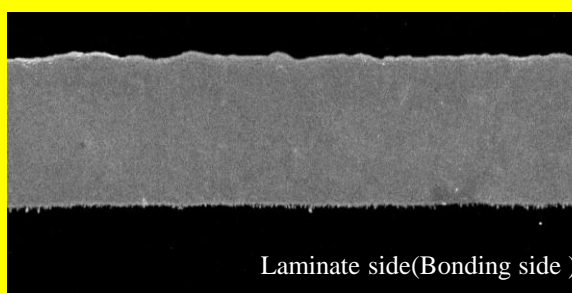


35μm Untreated-side Foil SEM × 1,500



35μm Treated-side Foil SEM × 1,500



Laminate side(Bonding side)

35μm Foil Cross Section SEM × 1,500

Composition :

Resist side

– Cross Section :



Laminate side(Bonding side)

– Resist/ Bonding side Color : Pink/ Pink

Application:

- HSD (High speed digital)
- Base station/Server/Storage/Switch
- Material: PPO/PPE

Feature:

- Very low nickel
- Excellent signal integrity (SI) performance.
- Good etching ability.
- Lower electrical resistivity compared to regular HVL.P.
- High peel strength with PPO/PPE resin system.
- Comply with environment regulation.
- Excellent PIM, anti-oxidation and shelf life.

VG410

MEASURED PARAMETERS		UNITS	PRODUCT GAUGE		IPC	
Nominal Thickness		μm oz.	18 1/2	35 1	Specification IPC-4562A	Test Method IPC-TM-650
Area Weight		g/m ²	148±5	280±8	3.4.4	2.2.12
Treated Side Contact Roughness	Rz	JIS B 601	≤1.5	≤1.5	-	2.2.17
	Rz	ISO 4287	≤1.8	≤1.8	3.4.5	
Treated Side Contactless Roughness	Sa	ISO 25178	~0.18	~0.16	-	2.2.22 Draft
	Sz	ISO 25178	~2.3	~2.1		
	Sdr	ISO 25178	~2.6	~2.5		
Untreated Side Contact Roughness	Ra	JIS B 601	≤0.3		3.5.6	2.2.17
Untreated Side Contactless Roughness	Sa	ISO 25178	~0.20		-	2.2.22 Draft
Tensile Strength		RT	≥294 (≥30)		3.5.1	2.4.18
		180°C	≥167 (≥17)			
Elongation		RT	7-25	10-35	3.5.3	
		180°C	5-20	8-25		
Peel Strength Ultra Low Loss Resin (RT)		N/mm (Lb/in)	≥0.45 (≥2.6)	≥0.6 (≥3.4)	3.5.4	2.4.8

※ The value is subject to the types of ultra low loss and thickness of laminate construction.

※ This is representative data, not guarantee.